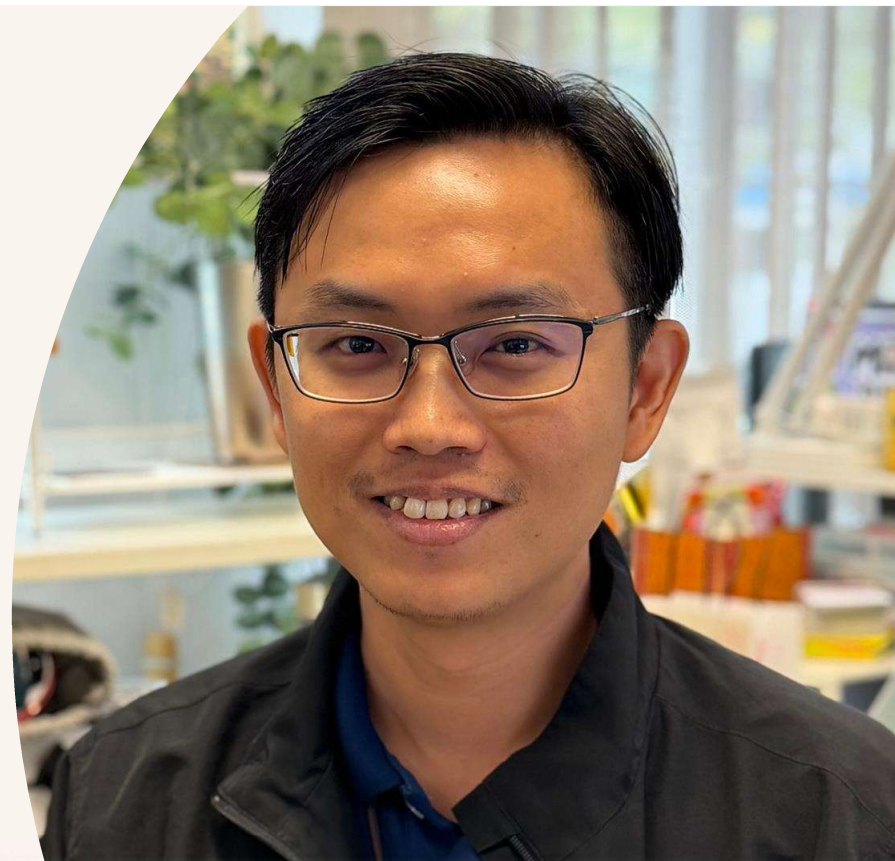




# PDLP

Personalised Digital Learning  
Programme



**Mr Huang Kee Hong**

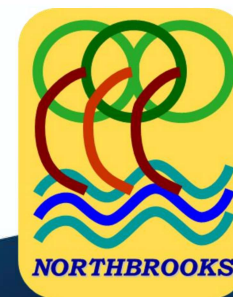
**SUBJECT HEAD**

**EDUCATION TECHNOLOGY**

**NORTHBROOKS  
SECONDARY SCHOOL**

# **The Northbrooks Personal Learning Device (PLD) Initiative**

Empowering Your Child's Secondary Journey



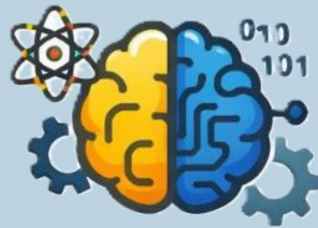
# Personal Learning Device (PLD) as a Catalyst for Growth

## Purpose of PLD



PLD enhance teaching and learning, support self-directed & collaborative learning, and support the development of digital literacies.

## Learning in an AI-Pervasive World



In an AI-enabled environment, our goal is to develop students' deep subject understanding alongside human capacities such as critical, adaptive, and inventive thinking.

## A School–Home Partnership



Developing students' ability to self-regulate requires close partnership between school and home to establish healthy digital habits.

## Northbrooks' Commitment



At Northbrooks, PLD use is supported by clear routines, guided lessons, and system-level safeguards to ensure safe and purposeful learning.

# Supporting Students in the Safe and Effective Use of the Devices

## Supporting Safe and Effective Use of PLD

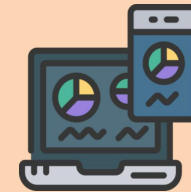
MOE and school has put in place measures to provide students with a safer digital learning environment:



**Cyber Wellness  
Education**



**School Rules and  
Learning Routines**



**Device  
Management  
Application (DMA)**

# PROVIDING A SAFER DIGITAL ENVIRONMENT FOR LEARNING

## After-School DMA Parent Options

After-School DMA Parent Options provide parents with the flexibility in managing your child's/ward's use of PLD after school hours.



Default	Option A	Option B
<b>In-school DMA settings will continue after school hours</b>	<b>DMA settings can be modified by Parents/Guardians after school hours</b>	<b>DMA will be inactive after school hours</b>
For parents/guardians who want their child's/ward's use of the device to be restricted only to teaching and learning, and prefer to leave it to the school to decide on DMA settings after school hours.	For parents/guardians who prefer to take charge of the level of restrictions for their child's/ward's use of the device after school hours regulated by the DMA.	For parents/guardians who do not want their child's/ward's use of the device after school hours to be regulated by the DMA at all.



# Areas we can work together on to foster School-Home Partnership

## 1 Respectful Communication

Aligning messages between home and school

Our children do best when schools and parents work hand in hand to support them.

## 2 Role Models

Modelling healthy and purposeful device use

## 3 Real Connections

Balancing digital learning with human relationships



## DEVICE AND FUNDING INFORMATION

### **Personal Learning Device Bundle**



**11<sup>th</sup> Gen Apple iPad**

**Total Cost with GST: \$860.90**

### **Enhanced Device Bundle**

The Enhanced Device Bundle that includes:

- 1) a 11th Gen Apple iPad, 128GB,
- 2) an Apple Pencil (USB-C) for iPad
- 3) a Logitech Ruggedized Combo 4
- 4) a Matte Screen Protector

\* 4-year warranty and 4-year insurance